

arete Australia  
Commercial Capability Statement 2023



<b>About Us</b>	<b>4</b>
Strength and Security	5
Executive Team Victoria	6
Company Structure	7
Certifications and Accreditations	8
<b>Commercial</b>	<b>9</b>
<b>Government</b>	<b>25</b>
<b>Contact</b>	<b>46</b>



**arete Australia** has quietly built a reputation for delivering highly complex interiors, fitouts and refurbishments.

Our team has worked on over 180 projects, delivering 255,444sqm within Victoria. We have applied our expertise to the education, health, aged care, government, commercial office and base building, hotel and hospitality sectors, delivering impeccable quality on schedule and budget.

As a division of Kane Constructions, we benefit from the financial strength, corporate governance and stringent management systems that this industry leader has refined over its 45+ years of operation.

#### EXPERIENCED SPECIALISTS

Our success has been built on the dedication, specialist skills and work ethic of our diverse team.

Each member is highly regarded within the industry for an ability to deliver projects of complexity and breadth.

We are also known for being proactive and reactive; we anticipate potential problems and quickly respond to any challenge that may arise.

#### WELL-BUILT RELATIONSHIPS

Our strong and ongoing relationships with our clients are testament to our commitment and reliability, as much as the exceptional quality of our work.

Through a collaborative and consultative process, we endeavour to understand each client's needs. We then set about creating bespoke solutions that meet design goals, timeframes and budgets.

#### DEFINING CULTURE

The workplace ethos at arete is one of cooperation, invention and transparency. It defines everything we do, from how we engage with staff to the relationships we build with our clients.

We thrive in a hard-working, collaborative and agile culture. We're dedicated to problem solving and refining our practices. Put simply, we go about what we do, and let our results speak for themselves.

Strength and Security

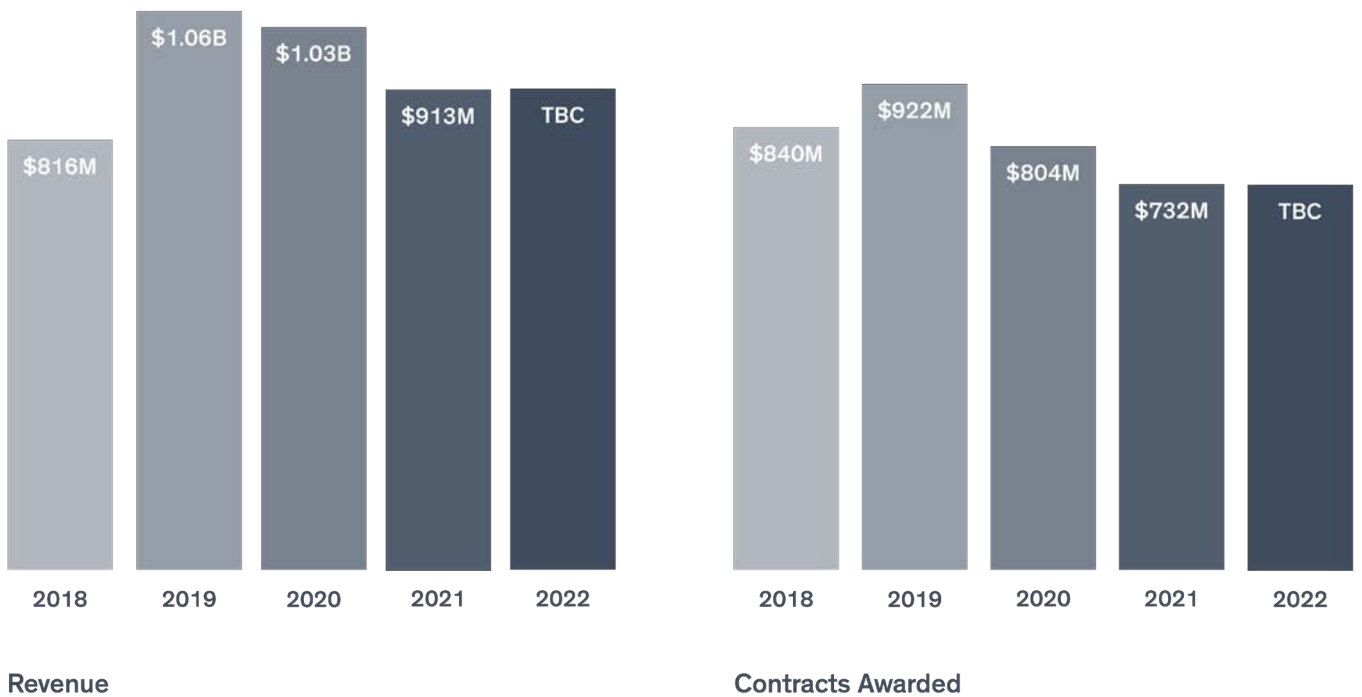
As a division of Kane Constructions, arete Australia benefits from their financial strength.

Annual turnover in excess of \$1 billion.

Projects in the \$1 million to \$250 million value range.

Able to maintain a bank guarantee and bonding facilities of \$80m + \$30m bonding facility from Vero.

Total assets exceeding \$150 million with a security facility to cater for well over \$1 billion of work under construction.



Executive Team Victoria



Richard Frisina  
JOINT MANAGING DIRECTOR



Tristan Forster  
JOINT MANAGING DIRECTOR



Matt Rossi  
JOINT GENERAL MANAGER

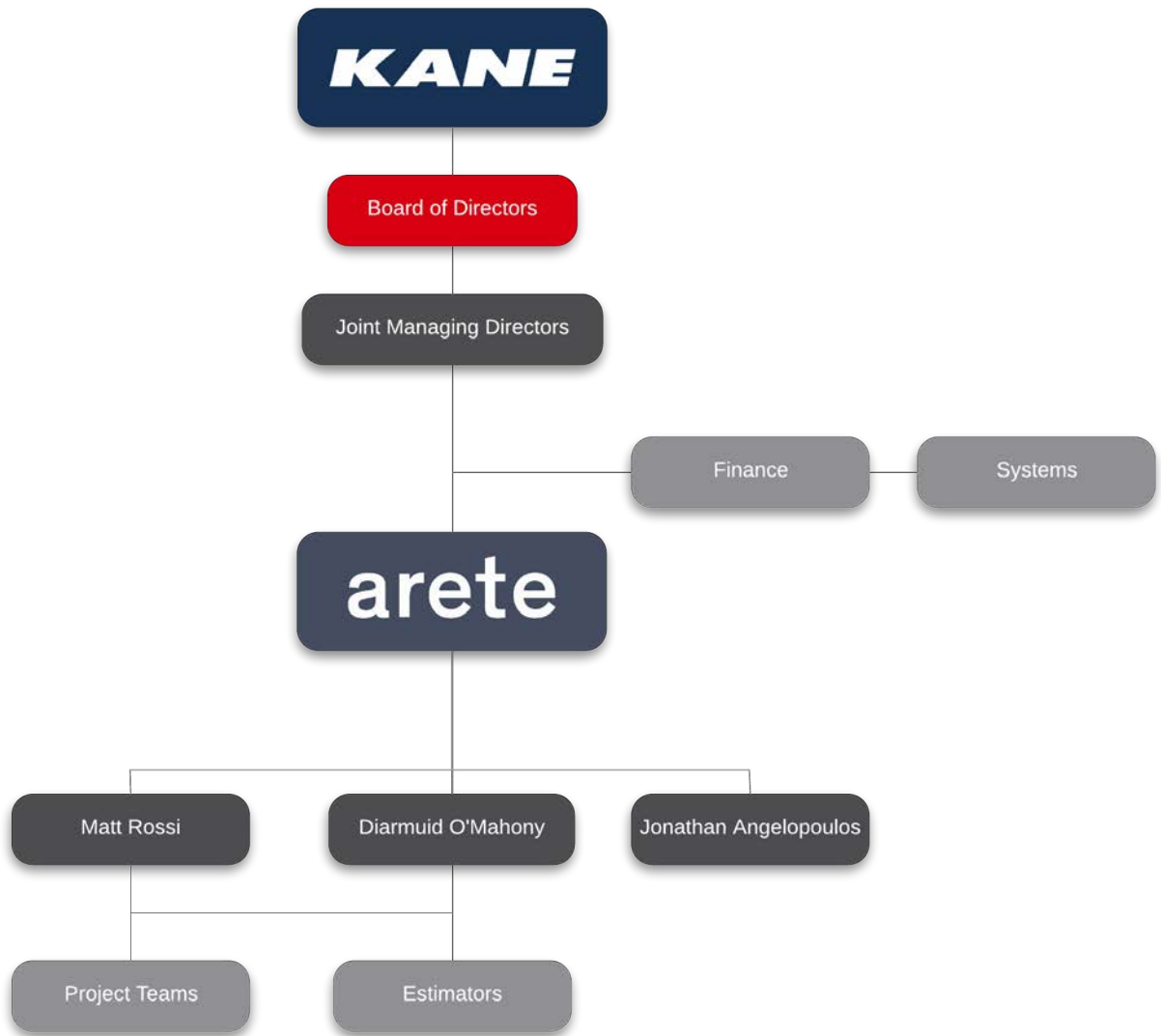


Diarmuid O'Mahony  
JOINT GENERAL MANAGER



Jonathan Angeloupolos  
BUSINESS DEVELOPMENT MANAGER

# Company Structure





Quality Assurance Management System  
ISO 9001:2015



Occupational Health and Safety Management System  
ISO 45001



Environmental Management System  
ISO 14001:2015



Australian Government Building and  
Construction OHS Accreditation Scheme



Treasury  
and Finance

National Pre-qualification System for Commercial & Residential  
Refurbishment and Office Fitout up to \$138 million - Construction  
Supplier Register (CSR)



# Commercial



## DCWC Office Fitout

Donald Cant Watts Corke (DCWC) required they were relocating from Level 3 within the GPO building to 180 Flinders Street and required a new space that could accommodate their growing staff.

Kane Constructions fitout and refurbishment division, arete Australia, was able to meet DCWC's needs by providing a 705m<sup>2</sup> space that included modern workplace with a new Arrival/Reception, Collaborative Spaces, Kitchen and Breakout area, Printing space, Pods, Storage space, New Boardroom and Offices. This allowed

for an increase in productivity for DCWC as well as providing a sophisticated yet functional work environment that would suit their needs in the future.

DCWC was able to maintain their original budget of \$800K by working with arete Australia who offered them a competitive quote while still providing an exceptional level of service and quality workmanship throughout the project.

### KEY PROJECT DETAILS

Private  
Lump Sum  
Commercial  
Fitout

### CLIENT

Donald Cant Watts Corke

### KEY CONSULTANTS

Corke Design Studio  
N Positive  
ADP Consulting

### VALUE

\$800,000

### PROJECT SIZE

705m<sup>2</sup>

### DURATION

7 Months

### COMPLETED

March 2022



## St Vincent De Paul Office Fit-out

arete Australia worked alongside Peddle Thorpe Architects (PTID) and Aston Consulting to complete the low bono refurbishment of the St Vincent De Paul Society's (SVDP) office building in Box Hill.

The project was for works on Levels 1 and 2, with a floor area of approximately 1,600m<sup>2</sup>. The refurbishment and modernisation project included the demolition to the majority of the two level interior and construction of new open plan work areas, meeting rooms, offices, a call centre and first aid room.

### KEY PROJECT DETAILS

Commercial  
Lump Sum  
Private  
Fitout

### CLIENT

St Vincent de Paul Society

### VALUE

\$950,000

### DURATION

1 Month

### KEY CONSULTANTS

Peddle Thorpe Interior  
Design  
Aston Consulting  
Grimbos Building Surveyors

### PROJECT SIZE

1,600m<sup>2</sup>

### COMPLETED

September 2020



## 8 Exhibition Street Foyer and Lobby Upgrade

arete Australia was engaged by the GPT Group to complete the fit-out and foyer upgrade of 8 Exhibition Street.

The foyer/lobby upgrade works included the demolition of existing finishes and installation of new floor finishes, stone and timber veneer cladding to walls; installation of new trafficable canopy between the existing lobby and entrance corridor from exhibition street.

The project also included the modification of existing services to suit the new layouts.

Additionally, the lobby was decorated with new joinery including new reception desk and new furniture thought out as documented, with a part of the internal space converted into a café, inclusive of a commercial kitchen.

### KEY PROJECT DETAILS

Commercial  
Design & Construct  
Private  
Fit-out  
Refurbishment

### CLIENT

The GPT Group

### KEY CONSULTANTS

Armitage Jones  
Bates Smart  
McKenzie Group  
WSP  
NDY

### VALUE

\$7,000,000

### PROJECT SIZE

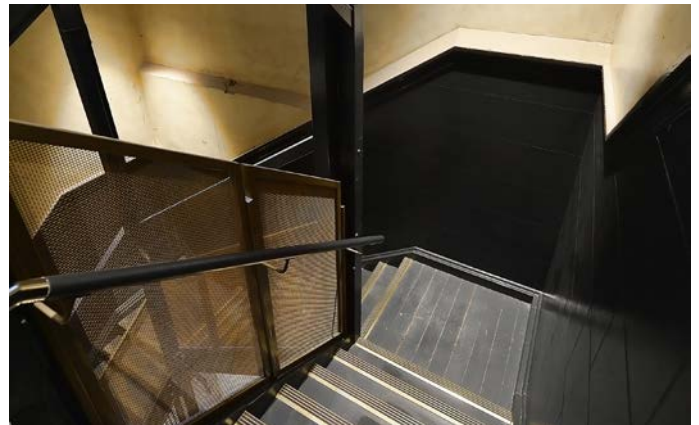
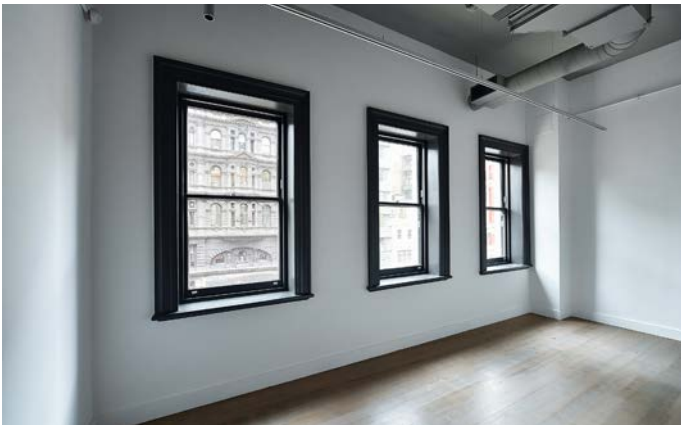
1,306m<sup>2</sup>

### DURATION

1 Year 2 Months

### COMPLETED

August 2020



## 107 Elizabeth Street Main Works

arete Australia was engaged by Pasino Investments to complete the refurbishment of the five-storey heritage building located at 107 Elizabeth Street.

The 107 Elizabeth Street Refurbishment Project involved the complete strip out of the upper levels (1 – 5) of the existing 100+ year old building, revitalising the space into a modern architectural office space. We also undertook the refurbishment of the fully tenanted ground floor retail space whilst it remained fully operational.

The upper levels stood derelict for 30 odd years and modernising this Elizabeth Street icon provided its share of challenges for the wider project team to work through and solve. The end result is a vibrant, open plan, multi-level tenancy that will be of benefit to the Melbourne CBD for many years to come.

### KEY PROJECT DETAILS

Commercial  
Lump Sum  
Private  
Multi Level  
Refurbishment

### CLIENT

Pasino Investments Pty Ltd

### KEY CONSULTANTS

Plus Architecture  
HSB Consulting  
Umow Lai  
FMG Engineering

### VALUE

\$5,900,000

### PROJECT SIZE

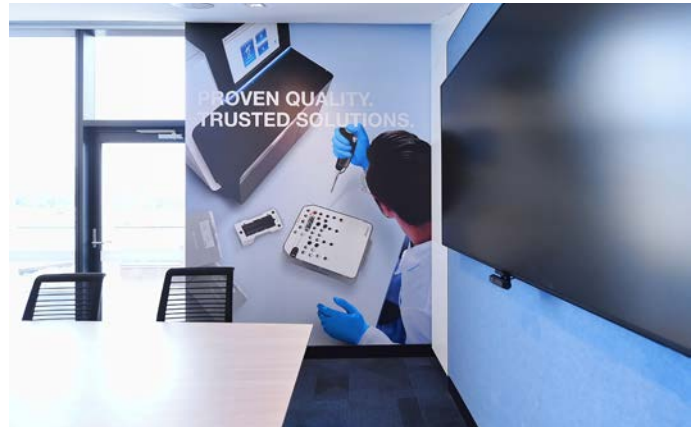
2,785m<sup>2</sup>

### DURATION

1 Year 4 Months

### COMPLETED

February 2020



illumina  
535 Elizabeth Street

arete Australia was engaged by innovative genetics technology company, illumina, to provide design and construct services for their office relocation project.

The relocation to Level 3 within the Nursing Association building located at 535 Elizabeth Street included the fitout of the new space and make good of their old tenancy.

Working in collaboration with FPPV Architects, we designed a modern open

space office to support a variety of working conditions.

The 600m<sup>2</sup> fitout included over 50 workstations, a customer greeting room, a business centre, three meeting rooms, generous collaboration space with pantry and amenities facilities that emphasize a collaborative workspace environment.

All alongside a panoramic outdoor area that provides stunning views of the Queen Victoria Market.

KEY PROJECT DETAILS

Commercial  
Design & Construct  
Private  
Fitout

CLIENT

illumina

KEY CONSULTANTS

Cushman & Wakefield  
FPPV Architecture

VALUE

\$1,000,000

PROJECT SIZE

600m<sup>2</sup>

DURATION

4 Months

COMPLETED

November 2019



## Australian Unity Level 6, 271 Spring Street

arete Australia was engaged by leading private health insurance providers, Australian Unity, to complete the fit-out of Level 6, 271 Spring Street located within Melbourne’s CBD in 2019.

The fit-out was to be to a Grade A standard in-line with the rest of the building. Working collaboratively with Bates Smart, arete successfully delivered the project to their high design standard and completed the fit-out within the programmed time and budget.

The scope of works included the installation of an inter-tenancy staircase, collaborative working and quiet focus zones, meeting rooms and open meet spaces, lift lobby refurbishment, a new kitchenette and the installation of workstations.

### KEY PROJECT DETAILS

Commercial  
Lump Sum  
Private  
Fitout

### CLIENT

Australian Unity

### KEY CONSULTANTS

APP  
Bates Smart  
WT Partnership  
Robert Bird Group  
Norman Disney & Young

### VALUE

\$3,000,000

### PROJECT SIZE

1,037m<sup>2</sup>

### DURATION

3 Months

### COMPLETED

September 2019



499 Ballarat Road,  
Sunshine

arete Australia was engaged by hankell brothers to complete the refurbishment of 499 Ballarat Road Sunshine.

The former VicRoads site was re-purposed for the Department of Justice as part of their Justice Accommodation Expansion Programme which arete was subsequently engaged to deliver.

The 2,250m<sup>2</sup> refurbishment included the demolition of the car park annex, installation of new glazed openings and upgrades to the interior amenities.

The team was required to keep disruptions to minimum as tenants occupied the first floor at the rear of the building.

**KEY PROJECT DETAILS**

Commercial  
Lump Sum  
Private  
Refurbishment

**CLIENT**

Henkell Brothers  
Investment Managers

**VALUE**

\$2,200,000

**DURATION**

9 Months

**KEY CONSULTANTS**

CLP Design  
O'Neill Group

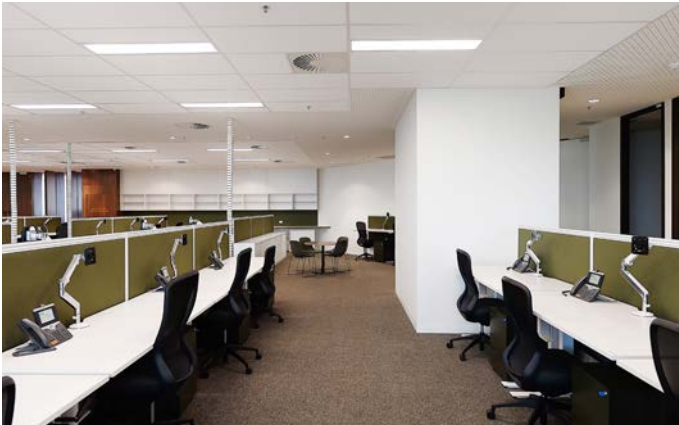
**PROJECT SIZE**

2,256m<sup>2</sup>

**COMPLETED**

May 2019





## Peter MacCallum Cancer Centre Executive Fitout

arete Australia's Victorian team collaborated with architects DesignInc to deliver the new executive office space for the Peter MacCallum Cancer Centre. Located on Level 13 of the Victorian Comprehensive Cancer Clinic, the new space provides a health services researchers with a collaborative zone.

The fitout included the construction of a large boardroom, meeting spaces, quiet rooms, open plan work areas and offices and a sizable breakout area that doubles as a flexible event space for functions, workshops, lectures and training. The works also included the supply and installation of workstations and loose furniture.

### KEY PROJECT DETAILS

Commercial  
Lump Sum  
Private  
Fitout

### CLIENT

Peter MacCallum Cancer Centre

### KEY CONSULTANTS

DesignInc  
Pavilion

### VALUE

\$3,800,000

### PROJECT SIZE

1,400m<sup>2</sup>

### DURATION

5 Months

### COMPLETED

January 2019



## 650 Lorimer Street Back to Base

arete Australia was awarded the 650 Lorimer Street Back to Base project by the GPT Group. This project was awarded to arete off the back of their successful delivery of the amenities refurbishment in early 2018.

The GPT Group required the entire tenancy fitout to be demolished, including floor coverings and ceilings. arete then refurbished the floor back to the base build requirements.

The scope of works included installation of new ceiling tiles, new and existing services installed in the ceiling, new carpet tiles laid throughout, refurbishment of the existing kitchen, external walls, moduline and window trims.

All works delivered exceeded client expectations, with early completion and a defect free delivery.

### KEY PROJECT DETAILS

Commercial  
Lump Sum  
Private  
Fitout  
Refurbishment

### CLIENT

The GPT Group

### KEY CONSULTANTS

Cactus Architects  
Accuraco

### VALUE

\$400,000

### PROJECT SIZE

1,890m<sup>2</sup>

### DURATION

1 Months

### COMPLETED

July 2018



## Sullivan and Cromwell Lawyers

The Sullivan and Cromwell Lawyers Office Level 32 refurbishment project works featured a new reception and boardroom areas with operable glass doors allowing the space to be transformed into a large scale meeting room and function area.

### KEY PROJECT DETAILS

Commercial  
Lump Sum  
Private  
Fitout

### CLIENT

Sullivan and Cromwell

### KEY CONSULTANTS

Carr Design Group  
Montlaur Project Services  
Pty Ltd  
Aston Consulting  
Renzo Tonin & Associates

### VALUE

\$800,000

### PROJECT SIZE

738m<sup>2</sup>

### DURATION

3 Months

### COMPLETED

February 2016



## Sotheby's Australia Collins Street Upgrade

arete Australia was engaged for and subsequently completed construction services for the \$5 million refurbishment of 14 Collins Street for Sotheby's Australia in early 2018.

The ground floor is now used as a display suite, Level 5 is comprised of two apartments, while the remaining levels contain office space.

The five storey refurbishment included the installation of a new lift car, ground floor slab (lowered to street level), with the heritage integrity of the building kept in tact.

### KEY PROJECT DETAILS

Commercial  
Lump Sum  
Private  
Multi Level  
Refurbishment

### CLIENT

Sotheby's Australia

### KEY CONSULTANTS

Simon Greenwood  
Architects  
HSB Consulting

### VALUE

\$5,000,000

### PROJECT SIZE

1,000m<sup>2</sup>

### DURATION

6 Months

### COMPLETED

May 2018



## 49 Exhibition Street Base Building Refurbishment

arete Australia was engaged as head contractor to complete the 49 Exhibition Street Base Building Refurbishment. The six storey refurbishment project was completed for international Property managers, Pasino Investments.

The building, consisting of a basement, ground floor and six additional levels, required a full services upgrade, new Shop front, Lift Lobbies, Amenities, End of Trip Facilities and Plant Rooms.

The refurbishment works included the complete demolition of the central core with amenities and plant rooms on each level, structural upgrades and fire proofing, promat flooring, new amenities for each level, open offices with exposed ceilings and polished concrete floors, independent fire proof service shafts and stunning foyer and lift lobby cladding with lighting show-pieces.

The client was so happy with the end result that they decided to relocate their offices to Level 6 of the building.

### KEY PROJECT DETAILS

Commercial  
Construction Management  
Private  
Fitout

### CLIENT

Pasino Investments Pty Ltd

### KEY CONSULTANTS

VIA Architects  
HSB Consulting

### VALUE

\$3,000,000

### PROJECT SIZE

2,000m<sup>2</sup>

### DURATION

8 Months

### COMPLETED

October 2017



## Renault Head Office

arete Australia was engaged to provide design and construct services for the fitout of Renault Australia’s Head Office fitout.

Located on Level 9, 3 Nexus court in Mulgrave. The 1,500m<sup>2</sup> fitout for international automotive manufacturer, Renault Australia was designed to meet A Grade standards.

The fitout included a new reception area, staff offices, meeting and training rooms, call centre, car showroom and bespoke car lift system to enable transportation of passenger cars on the Level 9 office floor from the Level 8 car park.

### KEY PROJECT DETAILS

Commercial  
Lump Sum  
International Client  
Fitout

### CLIENT

Renault

### VALUE

\$1,600,000

### DURATION

4 Months

### KEY CONSULTANTS

Peddle Thorp Interior  
Design  
Evolve Project Management

### PROJECT SIZE

1,500m<sup>2</sup>

### COMPLETED

April 2016



## Melbourne Rebels Office Fitout

arete Australia was selected as the preferred contractor for the Melbourne Rebels Office fitout and locker relocation within the iconic AAMI Park for the Melbourne Olympic parks trust. The relocation fitout included the conversion of existing offices into a new office and locker room facility for the Melbourne Rebels rugby team.

Home to the players, coaching and support staff, the new \$1.3 million facility includes staff offices, kitchen and breakout areas, doctors and analysis rooms, ice baths and gym and locker room amenities.

### KEY PROJECT DETAILS

Commercial  
Lump Sum  
Private  
Fitout  
Refurbishment

### CLIENT

Imperium Group

### KEY CONSULTANTS

McCabe Architects  
Pure Projects Project Management

### VALUE

\$1,300,000

### PROJECT SIZE

1,291m<sup>2</sup>

### DURATION

4 Months

### COMPLETED

April 2016



## Herbert Smith Freehills Law firm

arete Australia was approached to complete client floor fitout works for Herbert Smith Freehills law firm located within the prestigious 101 Collins Building in Melbourne’s Central Business District.

Stretching across 1300m<sup>2</sup>, the refurbishment for the international law firm included designer floor finishes and feature architectural elements within the reception and waiting area and throughout the 22 meeting rooms and function spaces.

### KEY PROJECT DETAILS

Commercial  
Lump Sum  
Private  
Fitout  
Refurbishment

### CLIENT

Herbert Smith Freehills

### KEY CONSULTANTS

Bates Smart  
Mckenzie Group Consulting  
Pty Ltd

### VALUE

\$1,000,000

### PROJECT SIZE

1,300m<sup>2</sup>

### DURATION

4 Months

### COMPLETED

January 2016



# Government



MELBOURN



# Justice and Community Safety

## DJCS Shepparton Justice Centre

arete Australia was engaged to complete the Justice Centre fitout works at Shepparton. The project includes the fitout of a 2,030m<sup>2</sup> area across two levels within the newly constructed 409 Wyndham Street, Shepparton.

To suit the Department of Justice and Community Safety's requirements, we constructed:

- Six new offices
- Two program rooms
- Three meeting rooms

- A conference room
- Two supervision rooms
- Five interview rooms
- A large youth justice room
- 116 workstations

Works also included a new reception counter, kitchen/staff breakout rooms, amenities, utility areas, sheriff's store and communications rooms.

The project was delivered under the traditional Lump Sum method.

### KEY PROJECT DETAILS

Correctional Services  
Lump Sum  
Government - State  
Fitout

### CLIENT

Department of Justice and  
Community Safety

### VALUE

\$2,700,000

### DURATION

5 Months

### KEY CONSULTANTS

TSA Management  
JMA Architects  
Lambert & Rehbein  
Interior Engineering

### PROJECT SIZE

2,030m<sup>2</sup>

### COMPLETED

January 2022



## Victoria Police HQ Fitout

In late 2020 arete Australia completed the three floor, 6000m<sup>2</sup>, office fit-out for Victoria Police at 311 Spencer Street. The fitout delivered in just 16 weeks included a High Security floor for the Chief Commissioner.

The project was delivered under a Construction Management agreement with design obligations throughout.

The fitout of office spaces included workstations, formal and informal meeting areas and the early delivery of the communications room.

### KEY PROJECT DETAILS

Commercial  
Construction Management  
Government - State  
Fitout

### CLIENT

Victoria Police

### VALUE

\$12,300,000

### DURATION

4 Months

### KEY CONSULTANTS

FPPV Architects  
Unispace  
Slattery Australia  
WSP Australia  
JAZ Building Consultants

### PROJECT SIZE

6,000m<sup>2</sup>

### COMPLETED

October 2020



## Melbourne East Police Station

arete Australia successfully tendered and delivered this interior refurbishment project within a live shopping mall environment at 202 Bourke Street, Melbourne.

Working from a bare shell, the interior fitout and refurbishment of 4,914m<sup>2</sup> of space was completed in only four months. The project scope for the main CBD police station included an office fitout, a new canopy, ballistic film, a new staircase and a ground floor slab.

A major challenge was the lack of access to the building, impacting goods ingress and traffic management. We proposed the erection of a materials hoist to allow for easy transfers from suppliers to the building site, and eliminating the need to share dock facilities with other centre tenants. Working within this difficult, live environment, our team successfully delivered a high quality product within an extremely tight timeframe.

### KEY PROJECT DETAILS

Correctional Services  
Lump Sum  
Government - State  
Fitout

### CLIENT

Victoria Police

### KEY CONSULTANTS

APP  
Bamford Architects  
Umow Lai  
Mitchell Brandtman

### VALUE

\$13,200,000

### PROJECT SIZE

4,914m<sup>2</sup>

### DURATION

6 Months

### COMPLETED

April 2019



## NDIA 510 Church Street

arete Australia was engaged to complete the fitout of the new NDIA Office in Richmond.

The project consists of the fit-out for the newly built spaces across levels 4 and 5 at 510 Church for the NDIA. The two floors include a number of open work spaces, offices, meeting rooms, quiet rooms, communal and shared spaces as well as kitchens and amenities.

### KEY PROJECT DETAILS

Commercial  
Lump Sum  
Private  
Fitout

### CLIENT

National Disability  
Insurance Scheme

### KEY CONSULTANTS

RPS Group  
Woods Bagot Pty Ltd

### VALUE

\$6,049,000

### PROJECT SIZE

4,300m<sup>2</sup>

### DURATION

5 Months

### COMPLETED

April 2022



## Moorabbin Specialist Family Violence Court

arete Australia was engaged to complete the extension for the Specialist Family violence courts at the Moorabbin Magistrates Court.

The new section of the court provides secure spaces for those experiencing family violence, so they can receive assistance and legal advice in a safe environment.

Works included the upgrade of Structural and Civil components including as Pre-cast Panels, Post Tension Concrete, Reinforcement Concrete and Civil Works. The upgrade of Electrical, Communication, Fire, Hydraulic, Security, AV services and fitout including walls, ceilings, floors and FF&E to Zones A and B located across the lower ground, ground and mezzanine levels.

### KEY PROJECT DETAILS

Correctional Services  
Lump Sum  
Government - State  
Refurbishment

### CLIENT

Court Services Victoria

### VALUE

\$3,200,000

### DURATION

9 Months

### KEY CONSULTANTS

Montlaur Project Services  
(Currently CBRE)  
Billard Leece Partnership  
Waterman AHW (VIC) Pty  
Ltd

### PROJECT SIZE

1,274m<sup>2</sup>

### COMPLETED

January 2020



## Treasury Building Refurbishment Works

arete Australia was engaged by the Department of Treasury and Finance to investigate, report and carry out remedial works for raising damp issues and water damaged walls, both externally and internally.

The façade upgrade on this Heritage listed building for the Commonwealth Government saw works completed in three phases.

The project required specialty trades with experience on heritage buildings works.

arete installed scaffold to the entire perimeter of the building with custom printed scaffwrap that incorporated a picture of the heritage building, this was done so passers by could not see the scaffold or works as they were being completed.

The entire façade of the building including window trims was completely repainted including installation of a 1m deep concrete culvert to the North, East and West of the building that captures water runoff.

### KEY PROJECT DETAILS

Commercial  
Lump Sum  
Government - State  
Refurbishment

### CLIENT

Department of Treasury & Finance

### VALUE

\$1,800,000

### DURATION

2 Years 9 Months

### KEY CONSULTANTS

Broadspectrum  
JLL  
Michael Taylor Architecture & Heritage

### PROJECT SIZE

42m<sup>2</sup>

### COMPLETED

September 2021



## Department of Justice Accommodation Expansion Programme (JAEP) Phase 1

arete Australia was selected to undertake Phase 1 of the Department of Justice and Community Safety’s accommodation expansion programme.

This initial phase of their expansion programme included the fitout and refurbishment of six office locations across Victoria. These locations include both metropolitan towns such as Derrimut, Cranbourne, Pakenham, South Morang and Reservoir and regional areas including Wonthaggi.

The works included demolition and refurbishment of each space to create offices for the Department of Justice staff.

The sites were run concurrently and required arete Australia to have numerous site managers available to complete the works.

Overall the Department of Justice were very happy with the way arete delivered the project and awarded us the second stage of works to be completed at different sites.

### KEY PROJECT DETAILS

Correctional Services  
Lump Sum  
Government - State  
Fitout  
Refurbishment

### CLIENT

The Department of Justice  
& Community Safety

### KEY CONSULTANTS

APP  
Innermode  
FMG Engineering

### VALUE

\$9,600,000

### PROJECT SIZE

20,627m<sup>2</sup>

### DURATION

6 Months

### COMPLETED

November 2016





## Department of Justice Accommodation Expansion Programme (JAEP) Phase 2

The second phase of the Department of Justice’s Accommodation Expansion Programme included the fitout and refurbishment of seven office locations including Broadmeadows, Roxburgh Park, Wodonga, Sale, Ballarat, Horsham and Warrnambool.

Each site has consultation rooms, open space working areas and office rooms and were delivered at different separable portions.

The sites are highly secure, where by each staff member who walks into a consult room will be equipped with duress button. This ensures that in the case of emergency, the room can be locked down and security summoned.

All the workstations are height adjustable within the office area, which gives the staff flexibility adjust the position of their desk and promotes active working environment.

### KEY PROJECT DETAILS

Correctional Services  
Lump Sum  
Government - State  
Fitout  
Refurbishment

### CLIENT

The Department of Justice  
and Community Safety

### KEY CONSULTANTS

APP  
Innermode

### VALUE

\$7,800,000

### PROJECT SIZE

4,800m<sup>2</sup>

### DURATION

4 Months

### COMPLETED

March 2017



Department of Justice  
Accommodation Expansion  
Programme (JAEP)  
Phase 3

The Department of Justice's Accommodation Expansion Programme - Phase 3 included the fitout and refurbishment of two sites, one within the Melbourne CBD the other in Bendigo.

Works included demolition of existing walls and furniture to create open plan office space, kitchen utility and communications rooms, whilst retaining and re-purposing meeting rooms and offices.

Whilst works were undertaken adjoining tenancies remained operational which required the implementation of stringent safety protocols.

**KEY PROJECT DETAILS**

Correctional Services  
Lump Sum  
Government - State  
Fitout  
Refurbishment

**CLIENT**

The Department of Justice  
and Community Safety

**KEY CONSULTANTS**

TSA Management  
JMA Architects  
Plan Cost  
Umow Lai

**VALUE**

\$1,700,000

**PROJECT SIZE**

1,489m<sup>2</sup>

**DURATION**

3 Months

**COMPLETED**

June 2018



Department of Justice  
Accommodation Expansion  
Programme (JAEP)  
Phase 3 - Sunshine

In addition to the Melbourne CBD and Bendigo offices, the Department of Justice Fit out of new offices and client interfacing space for the Department of Justice. This space includes, offices, meeting and programme rooms, utilities area, front counter and conference room including full supply of workstations and loose furniture.

This space was recently refurbished to back to base by arete Australia. The project ran concurrently with the base build landscaping works.

**KEY PROJECT DETAILS**

Correctional Services  
Lump Sum  
Government - State  
Fitout  
Refurbishment

**CLIENT**

The Department of Justice  
and Community Safety

**KEY CONSULTANTS**

TSA Management  
JMA Architects  
Umow Lai

**VALUE**

\$2,200,000

**PROJECT SIZE**

2,350m<sup>2</sup>

**DURATION**

3 Months

**COMPLETED**

June 2019



## Telecommunications Industry Ombudsman

arete Australia was engaged to complete the office fitout for the Telecommunications Industry Ombudsman (TIO) back in 2016.

The Scope of works included a new boardroom, offices, new carpet and workstations to the entire floor.

The TIO fitout project covered 2,800m<sup>2</sup> across one level within the 717 Bourke Street, Melbourne.

Completed over a six week period, the fitout was delivered within a live environment, one which required stringent noise control, as the Channel 9 TV station operated two floors above.

### KEY PROJECT DETAILS

Commercial  
Lump Sum  
Government - Commonwealth  
Fitout  
Refurbishment

### CLIENT

Telecommunications Industry Ombudsman

### VALUE

\$1,400,000

### DURATION

2 Months

### KEY CONSULTANTS

CBRE  
Peddle Thorpe Interior Design  
Currie & Brown

### PROJECT SIZE

2,800m<sup>2</sup>

### COMPLETED

November 2016



## Family Support and Safety Hubs

arete Australia was engaged by the department of Treasury and Finance to deliver five separate family safety centres across both regional and metropolitan Victoria.

The Family Support and Safety Hubs Project was delivered at existing facility locations including Geelong, Heidelberg, Frankston, Morwell and Mildura.

The complex design included curved ply veneered walls and curved joinery which proved to have many challenges but through lessons learnt the fitout works become very efficient.

With the spaces delivered containing Secure consultation rooms, client lounge spaces, reception areas and administration facilities.

### KEY PROJECT DETAILS

Correctional Services  
Lump Sum  
Government - State  
Fitout

### CLIENT

Department of Treasury & Finance

### VALUE

\$11,500,000

### DURATION

11 Months

### KEY CONSULTANTS

APP  
Billard Leece Partnership  
WT Partnership  
Bonnacci Group

### PROJECT SIZE

4,489m<sup>2</sup>

### COMPLETED

November 2018



## Supreme Court of Victoria Tenancies Alterations

arete Australia was engaged by Court Services Victoria to complete the Tenancies alterations within the Supreme Court of Victoria, located in Melbourne’s Bustling Central Business District.

arete was also required to complete alterations to services including electrical, security, mechanical, fire and hydraulics.

The project, delivered on time and in budget, included the demolition of existing partitions, doors, ceilings, floor finishes and joinery to create a new office space and meeting rooms.

### KEY PROJECT DETAILS

Commercial  
Lump Sum  
Government - State  
Refurbishment  
Fitout

### CLIENT

Court Services Victoria

### VALUE

\$340,000

### DURATION

1 Month

### KEY CONSULTANTS

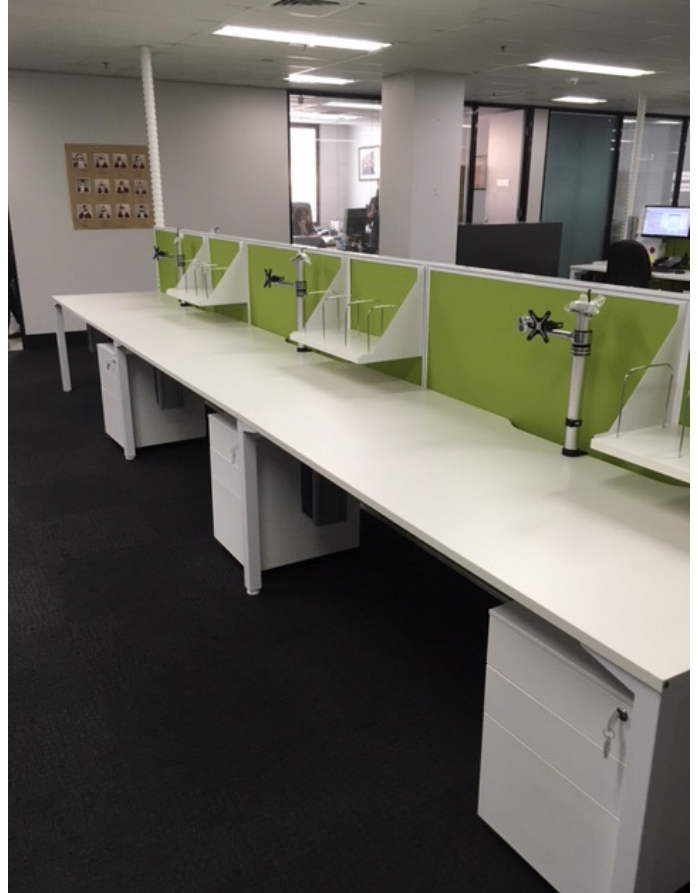
McIldowie Partners

### PROJECT SIZE

340m<sup>2</sup>

### COMPLETED

May 2018



## Supreme Court of Victoria Refurbishment

The Supreme Court of Victoria project consisted of three stages to refurbish the registry office to Level 2 of the Supreme Court whilst the facility remains operational.

The Reception area was completed in two stages to ensure that staff were able to continue to provide services to the public throughout the project lifecycle. To enable works to be delivered without disrupting staff, users and court proceedings, arete Australia completed the works out of hours in addition to securing the zones with acoustic fridge panels to keep dust out.

High detailed joinery and furniture finishes, security functionality and acoustic partitions were all key deliverables for the Supreme Court.

Integrating existing conditions and furnishings with the new design and ensuring each task was completed by the proposed completion date were integral to the success of the project.

### KEY PROJECT DETAILS

Correctional Services  
Lump Sum  
Government - State  
Refurbishment

### CLIENT

Court Services Victoria

### VALUE

\$900,000

### DURATION

4 Months

### KEY CONSULTANTS

Johnstaff Projects Pty Ltd  
McIldowie Partners  
FMSA Architecture

### PROJECT SIZE

386m<sup>2</sup>

### COMPLETED

December 2017



# Justice and Community Safety

## Department of Justice Geelong Office

arete Australia was engaged by the Department of Justice and Community safety to complete the refurbishment and fitout works for the ground and first floors for their Geelong office.

The new spaces include, designated hot desk area, communications room, meeting rooms, storage spaces, working spaces and separate client and staff kitchens.

The scope of works included an internal strip-out, services upgrades and installation of walls, floors and ceiling finishes, workstations, and loose furniture.

**KEY PROJECT DETAILS**

Correctional Services  
Lump Sum  
Government - State  
Fitout  
Refurbishment

**CLIENT**

Department of Justice and  
Community Safety

**KEY CONSULTANTS**

TSA Management  
JMA Architects

**VALUE**

\$570,000

**PROJECT SIZE**

500m<sup>2</sup>

**DURATION**

2 Months

**COMPLETED**

July 2018





# COURT SERVICES

## VICTORIA

### CSV Frankston & Dandenong Courts

arete Australia was engaged by Court Services Victoria to undertake the refurbishment of the Dandenong and Frankston Magistrate Courts.

Works included the supply and installation of new workstations, the painting of all court rooms, offices and public spaces, new lighting and replacement of seating throughout.

**KEY PROJECT DETAILS**

Correctional Services  
Lump Sum  
Government - State  
Refurbishment

**CLIENT**

Court Services Victoria

**VALUE**

\$2,100,000

**DURATION**

4 Months

**KEY CONSULTANTS**

Billard Leece Partnership

**PROJECT SIZE**

5,667m<sup>2</sup>

**COMPLETED**

February 2019



## Youth Justice Reform Project

arete Australia was engaged to complete the Youth Justice Reform refurbishment project within the Melbourne Children’s Court building on Little Collins Street in the CBD.

The aim of the project was to enable to the initial phase of the state-wide roll out of the Youth Justice Reform project, lead by the Department of Justice and community Safety.

The refurbishment of the children’s court consisted of filling in voids across two levels to create more office space, interview and meeting rooms and support spaces.

Additional access was created to magistrates chambers. The spaces were re-carpeted and painted, with new furniture installed throughout the majority of Levels 1, 2 and 3.

### KEY PROJECT DETAILS

Correctional Services  
Lump Sum  
Government - State  
Refurbishment

### CLIENT

Court Services Victoria

### VALUE

\$1,600,000

### DURATION

11 Months

### KEY CONSULTANTS

Johnstaff Projects Pty Ltd  
Guymer Bailey Architects  
Cundall  
MBM

### PROJECT SIZE

678m<sup>2</sup>

### COMPLETED

August 2019



## Victorian Government Office Fitout

arete Australia was awarded the high security 696m<sup>2</sup> office refurbishment project for the Victorian State Government.

The refurbishment works included the complete demolition of the previous office space, installation of all office accommodation, including meeting rooms, offices, kitchens and breakout space.

Due to the highly secure nature of the project arete was tasked to install specialty glazing to specific sections of the floor on which the fitout took place.

### KEY PROJECT DETAILS

Commercial  
Lump Sum  
Government - State  
Fitout  
Refurbishment

### CLIENT

Department of Treasury and Finance  
Department of Premier and Cabinet

### VALUE

\$3,000,000

### PROJECT SIZE

696m<sup>2</sup>

### DURATION

6 Months

### COMPLETED

August 2018

### KEY CONSULTANTS

METIER3 Pty Ltd  
Hinds Blunden Engineering  
Slattery Australia



## Melbourne CLC - Lift Motors Access Hatches

arete Australia was engaged by Court Services Victoria to complete the design, documentation and installation of life motor access hatches modifications within the Melbourne Commonwealth Law Courts.

The project required amendments to existing services to enable the appropriate positioning of four access hatches in the specified areas.

The design and documentation component included a formal safety guard rail system around each hatch and the lifting of the gantry for each lift motor access room to enable safe manoeuvring, lowering/raising and replacement of lift motor room equipment.

### KEY PROJECT DETAILS

Correctional Services  
Lump Sum  
Government - State  
Refurbishment  
Fitout

### CLIENT

Court Services Victoria

### VALUE

\$390,000

### DURATION

1 Month

### KEY CONSULTANTS

Broadspectrum  
Bonacci Group  
CAF Consulting  
Rudds Consulting  
Engineers

### PROJECT SIZE

50m<sup>2</sup>

### COMPLETED

June 2018

