

arete Australia  
Health & Aged Care  
Capability Statement 2023



<b>About Us</b>	<b>4</b>
Strength and Security	5
Executive Team Victoria	6
Company Structure	7
Certifications and Accreditations	8
<b>Health &amp; Aged care</b>	<b>9</b>
<b>Contact Us</b>	<b>33</b>



**arete Australia** has quietly built a reputation for delivering highly complex interiors, fitouts and refurbishments.

Our team has worked on over 180 projects, delivering 255,444sqm within Victoria. We have applied our expertise to the education, health, aged care, government, commercial office and base building, hotel and hospitality sectors, delivering impeccable quality on schedule and budget.

As a division of Kane Constructions, we benefit from the financial strength, corporate governance and stringent management systems that this industry leader has refined over its 45+ years of operation.

#### EXPERIENCED SPECIALISTS

Our success has been built on the dedication, specialist skills and work ethic of our diverse team.

Each member is highly regarded within the industry for an ability to deliver projects of complexity and breadth.

We are also known for being proactive and reactive; we anticipate potential problems and quickly respond to any challenge that may arise.

#### WELL-BUILT RELATIONSHIPS

Our strong and ongoing relationships with our clients are testament to our commitment and reliability, as much as the exceptional quality of our work.

Through a collaborative and consultative process, we endeavour to understand each client's needs. We then set about creating bespoke solutions that meet design goals, timeframes and budgets.

#### DEFINING CULTURE

The workplace ethos at arete is one of cooperation, invention and transparency. It defines everything we do, from how we engage with staff to the relationships we build with our clients.

We thrive in a hard-working, collaborative and agile culture. We're dedicated to problem solving and refining our practices. Put simply, we go about what we do, and let our results speak for themselves.

Strength and Security

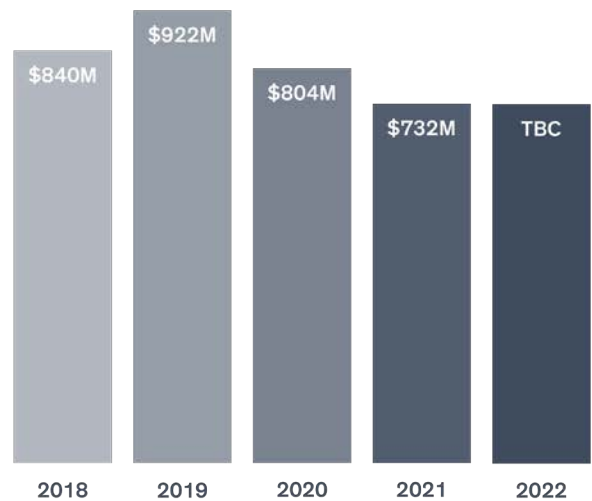
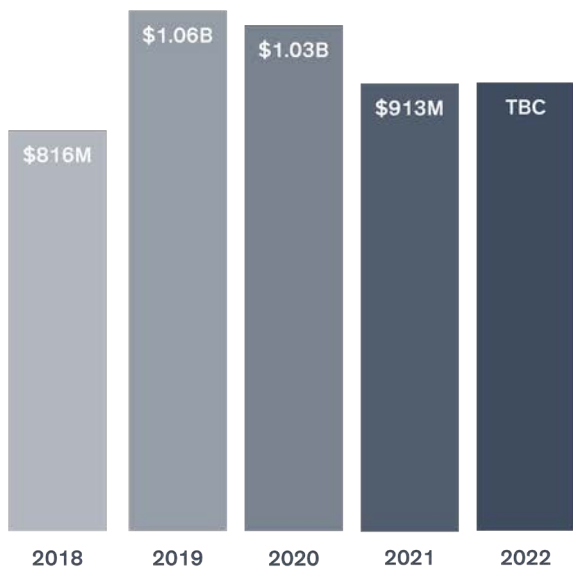
As a division of Kane Constructions, arete Australia benefits from their financial strength.

Annual turnover in excess of \$1 billion.

Projects in the \$1 million to \$250 million value range.

Able to maintain a bank guarantee and bonding facilities of \$80m + \$30m bonding facility from Vero.

Total assets exceeding \$150 million with a security facility to cater for well over \$1.03 billion of work under construction.



Revenue

Contracts Awarded

Executive Team Victoria



Richard Frisina  
JOINT MANAGING DIRECTOR



Tristan Forster  
JOINT MANAGING DIRECTOR



Matt Rossi  
JOINT GENERAL MANAGER

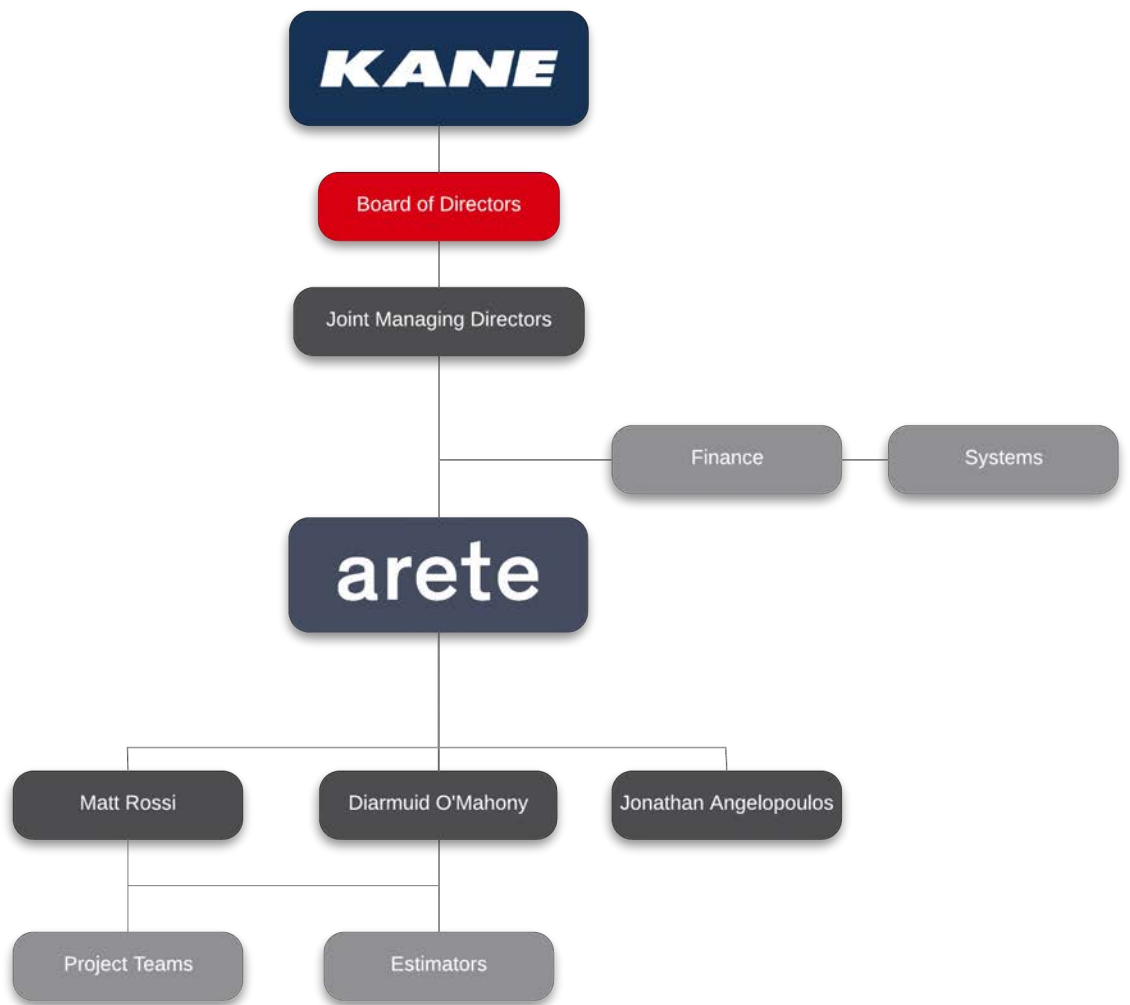


Diarmuid O'Mahony  
JOINT GENERAL MANAGER



Jonathan Angeloupolos  
BUSINESS DEVELOPMENT MANAGER

# Company Structure





Quality Assurance Management System  
ISO 9001:2015



Occupational Health and Safety Management System  
ISO 45001



Environmental Management System  
ISO 14001:2015



Australian Government Building and  
Construction OHS Accreditation Scheme



Treasury  
and Finance

National Pre-qualification System for Commercial & Residential  
Refurbishment and Office Fitout up to \$138 million - Construction  
Supplier Register (CSR)





# Healthcare



## Old Peter MacCallum Cancer Centre Imaging Relocation

arete Australia was awarded the Construction Management contract for the Peter MacCallum Cancer Centre (PMCC) Imaging Relocation project.

The project will involve installing a new Medical Imaging and Radiology Day into Level 1 of the Eye and Ear Hospital on the Park in East Melbourne (the former Peter Mac site).

In addition to the imaging modalities, the project will also incorporate a fitout of all associated staff and clinical support areas such as:

- Reporting rooms
- Fluoroscopy and radiographer work rooms
- Medication rooms
- Anaesthetic prep rooms
- Staff bases
- Patient holding and recovery bays
- Waiting areas
- Administration offices
- Staff amenities

### KEY PROJECT DETAILS

Construction Management  
Government - State  
Healthcare  
Fitout

### CLIENT

Peter MacCallum Cancer Centre

### VALUE

\$15,600,000

### DURATION

TBC - Current Project

### KEY CONSULTANTS

Johnstaff  
Gray Puksand  
Slattery Australia  
LCI Consultants

### SIZE

1,800m<sup>2</sup>

### COMPLETED

May 2023



## Djerriwarrh Health (Bacchus Marsh) Hospital Infrastructure Upgrade

In late 2021, arete Australia was engaged by Djerriwarrh Health Services to undertake infrastructure upgrade works at the Bacchus Marsh Hospital.

The project will deliver a significant improvement for health services in Melbourne’s Western growth corridor.

The scope of works includes the upgrade of mechanical and electrical services and various civil and roofing works.

### KEY PROJECT DETAILS

Construction Management  
Private  
Healthcare  
Refurbishment

### CLIENT

Victorian Health Building Authority (VHBA)

### KEY CONSULTANTS

Pure Projects  
Slattery Australia  
Waterman Group  
Vincent Chrisp Architects

### VALUE

\$5,700,000

### PROJECT SIZE

1,300m<sup>2</sup>

### DURATION

TBC - Current Project

### COMPLETED

August 2022  
(Current Project)



Monash IVF  
510 Church Street

Monash IVF have engaged arete Australia to complete their fitout at 510 Church Street in Richmond.

The project includes the fitout of a space of approx 2,600m<sup>2</sup> that will incorporate:

- Day Hospital facilities
- IVF Science Laboratory including sterile areas
- Corporate offices
- Work areas
- Large reception and waiting area

**KEY PROJECT DETAILS**

Healthcare  
Design & Construct  
Private  
Fitout

**CLIENT**

Monash IVF Group

**VALUE**

\$7,924,746

**DURATION**

Current Project

**KEY CONSULTANTS**

Silver Thomas Hanley  
Slattery Australia  
Waterman AHW

**PROJECT SIZE**

2,600m<sup>2</sup>

**COMPLETED**

Current Project



## Austin Angiography Stage 2

This project was the redevelopment and expansion of the Angiography Suite within the Radiology Department in Austin Health's Lance Townsend Building. The existing X-Ray and In-Patient Waiting areas were demolished with a new Angio room, new X-Ray room and new sterile store created. Additionally, the two existing Angiography rooms within the building were refurbished.

### KEY PROJECT DETAILS

Lump Sum  
Private  
Healthcare  
Refurbishment

### CLIENT

Austin Health

### VALUE

\$2,535,800

### DURATION

1 Year 4 Months

### KEY CONSULTANTS

ClarkeHopkinsClarke  
a2m consulting  
John Mullen & Partners  
LCI Consultants  
Singh Consulting

### PROJECT SIZE

678m<sup>2</sup>

### COMPLETED

February 2022



## Cabrini Palliative Care Level 4, South Block

arete were engaged by Cabrini Health to assist them with the refurbishment and fit-out of their existing Level 4 South Block Palliative Care Ward from a 4 x 4 bedroom to a single, private 6 bed room with ensuite and modernised technology to extend their service offering to their patients.

Stringent infection control procedures along with strict Covid-19 management plan were followed to ensure there were minimal risk to staff and patients from construction contaminants being carried to other areas

of the hospital, whilst works were being carried out in a live environment.

The elaborate expansion mirrored the construction specification of the newly built Gandel Wind (Built by Kane Constructions), which added value in the installation of high end fixtures and fittings for the client. The expansion also included installation of challenging Mechanical, Electrical, AV, Nurse call and Medical Gas works, along with the installation of floor to ceiling vinyl.

### KEY PROJECT DETAILS

Healthcare  
Lump Sum  
Private  
Refurbishment

### CLIENT

Cabrini Health

### VALUE

\$930,639

### DURATION

2 Months

### KEY CONSULTANTS

DesignInc  
Aurecon  
Lehr Consultants  
International  
Gardner Group Pty Ltd

### PROJECT SIZE

300m<sup>2</sup>

### COMPLETED

November 2020



## Cabrini MC3 Operating Theatres Expansion

arete completed the fit-out of a 525m<sup>2</sup> new Orthopaedic operating Theatre and Neurology Theatre within the existing MC3 Building.

Onsite works entailed a typical medical theatre fitout, including highly detailed and challenging Mechanical, Electrical/AV and Medical Gases works.

It saw the installation of the first two AirFrame systems in Victoria. This in-ceiling system is the backbone structure which supports the theatre pendants and theatre lights, plus houses all airflow and above theatre table LED lighting.

### KEY PROJECT DETAILS

Healthcare  
Lump Sum  
Private  
Fitout  
Refurbishment

### CLIENT

Cabrini Health

### KEY CONSULTANTS

Aurecon  
DesignInc  
Slattery Australia  
AECOM  
PJM Engineering Services

### VALUE

\$2,800,000

### PROJECT SIZE

523m<sup>2</sup>

### DURATION

4 Months

### COMPLETED

January 2019



## Monash Health Electrical Upgrade works

arete were engaged as principle contractors to complete the Monash Medical Centres Electrical Upgrade. The electrical upgrade now spans throughout level 1 of the Monash Hospital in Clayton. The main portion of the project consisted of services upgrades, including complete fire services upgrade for both the mist fire system and the rest fire system. The upgrade took place across 5 different departments within the medical centre.

### KEY PROJECT DETAILS

Healthcare  
Lump Sum  
State - Government  
Services

### CLIENT

Monash Health

### VALUE

\$750,000

### DURATION

7 Months

### KEY CONSULTANTS

Merat Architects  
Kersulting  
Waterman AHW P/L

### PROJECT SIZE

200m<sup>2</sup>

### COMPLETED

October 2019





## Monash Children’s Hospital, Imagination Tree

arete were engaged as principle contractors to build an Imagination Tree for Monash Children’s Hospital on behalf of Monash Health. The Monash Imagination Tree spans four levels (levels two to five) inside the hospital. The Monash Imagination Tree is designed to be a sanctuary to connect young patients and guests, and promote healing through the sharing of magical moments.

With design inspiration from World leading companies, the second floor offers plenty of space to run, hide and play collaborative games with friends. Patients & guests can then gather on the third floor to read storybooks. The fourth floor canopy offers crafts and interactive play, while the fifth floor provides a relaxing lounge to sit back and watch the sky change from day to night.

### KEY PROJECT DETAILS

Healthcare  
Lump Sum  
Government - State  
Fitout

### CLIENT

Monash Health

### KEY CONSULTANTS

ClarkeHopkinsClarke  
Irwinconsult  
Waterman AHW P/L  
Omnii P/L  
PLP Building Surveyors

### VALUE

\$2,300,000

### PROJECT SIZE

168m<sup>2</sup>

### DURATION

9 Months

### COMPLETED

December 2019



## Austin Health Angiography Pre-works

arete completed the Angiography pre-works project for Austin Health, which was delivered in 3 stages.

Pre-works stage 1: Radiology ED, Level 1, Austin Tower, Austin Campus. The works include modifying existing change rooms to include a wheelchair bay, and installing two new workstations with joinery.

Pre-works stage 2 and 3: Radiology Department, Level 2, Lance Townsend Building. These works have been divided into two stages. The first stage propose to

demolish a redundant equipment storage area, wheelchair trolley bay, 3 offices and a small sterile store. It is proposed to build a Sterilizing Room, Clean up room, Interview room, larger Sterile Stock room and an Unpacking area. A new nurse base will also be installed in the Admissions and Recovery area. The last stage proposes to construct a new plant room and general store.

### KEY PROJECT DETAILS

Healthcare  
Lump Sum  
Private  
Fitout  
Refurbishment

### CLIENT

Austin Health

### VALUE

\$430,000

### DURATION

3 Months

### KEY CONSULTANTS

ClarkeHopkinsClarke  
a2m Consulting  
John Mullen and Partners  
(JMP)  
LCI

### PROJECT SIZE

250m<sup>2</sup>

### COMPLETED

September 2019



## Royal Melbourne Hospital PET / CT Scan Expansion

arete worked with The Royal Melbourne Hospital to complete their PET / CT Expansion project, a 560m<sup>2</sup> internal fit out for the Hospitals Nuclear Medicine Department. This department has seen rapid growth in recent years and identified the need to expand their PET / CT services to cater for their immediate patients and the wider community.

PET is used routinely for the staging, treatment selection, planning and therapeutic response assessment for many cancer types; however, PET / CT is

also expected to have an increasing role in clinical cardiology and other systemic diseases.

The new facility included: General Administration and reception area, waiting area, staff space, general offices, waste room, medical store room, four Patient Uptake Rooms (shielded), one Hot Lab (shielded), one PET / CT Scan Room (shielded), one Equipment Room, one Control Room, Discharge Waiting Area (shielded), Patient W/C (shielded) and Public W/C.

### KEY PROJECT DETAILS

Healthcare  
Lump Sum  
Private  
Fitout

### CLIENT

Melbourne Health

### VALUE

\$2,100,000

### DURATION

6 Months

### KEY CONSULTANTS

Clarke Hopkins Clarke  
Johnstaff Projects Pty LTD  
Donald Cant Watts Corke  
John Mullen & Partners

### PROJECT SIZE

560m<sup>2</sup>

### COMPLETED

December 2017



## Austin Health Satellite Reprocessing

The Austin Health Satellite Reprocessing project consisted of the refurbishment areas which were identified as non-compliant with current standards.

The two sites identified for upgrade included the ICU, on Level 2 and the Cardiology T.O.E. Department on Level 5 within the Austin Tower.

### KEY PROJECT DETAILS

Healthcare  
Lump Sum  
Private  
Refurbishment

### CLIENT

Austin Health

### KEY CONSULTANTS

Vincent Crisp Architects  
Lehr Consultants  
International (LCI)

### VALUE

\$250,000

### PROJECT SIZE

119m<sup>2</sup>

### DURATION

2 Months

### COMPLETED

October 2019



## I-MED Coolaroo

arete completed the partial fit-out of the ground floor at 1550 Pascoe Vale Road Coolaroo for I-MED. The scope of works included a new breast screening room, recovery bays, nurse's stations, ultrasound clinics, OPG room and a new reception and waiting area.

### KEY PROJECT DETAILS

Lump Sum  
Private  
Healthcare  
Fit-out

### CLIENT

Healthcare Projects  
Australia

### VALUE

\$960,000

### DURATION

3 Months

### KEY CONSULTANTS

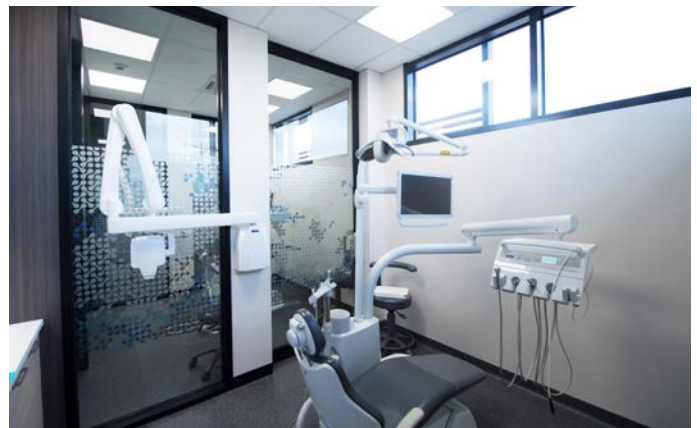
WSP Australia  
Matrix Engineering Group

### PROJECT SIZE

501m<sup>2</sup>

### COMPLETED

October 2020



## Craigieburn Medical and Dental Centre

The Craigieburn Medical and Dental Centre project was the fitout of the newly built structure for an all encompassing Mega Medical and Dental Clinic.

Included in the works were Medical and Consulting suites, X-Ray and Imaging, Pathology, Physiotherapy, Independent receptions, Treatment Areas, Meeting Rooms, Public and Staff toilets, Pharmacy and a complete Dental Clinic.

The project required experienced trades in the Health Sector including specific Data and

electrical requirements, Nurse Call, Security, Medical Gases, and Specific Hygiene required finishes and tests, Acoustic Requirements, Lead Lining and Nuclear protection for Imaging.

The project was also an identified Green Star Project with all elements of the construction and finishing phase incorporating minimal requirements to achieve this. arete targeted specific areas here, which resulted in some more expensive options not being required to achieve the accreditation.

### KEY PROJECT DETAILS

Healthcare  
Lump Sum  
Private  
Fitout

### CLIENT

Primary Healthcare Limited

### VALUE

\$3,300,000

### DURATION

8 Months

### KEY CONSULTANTS

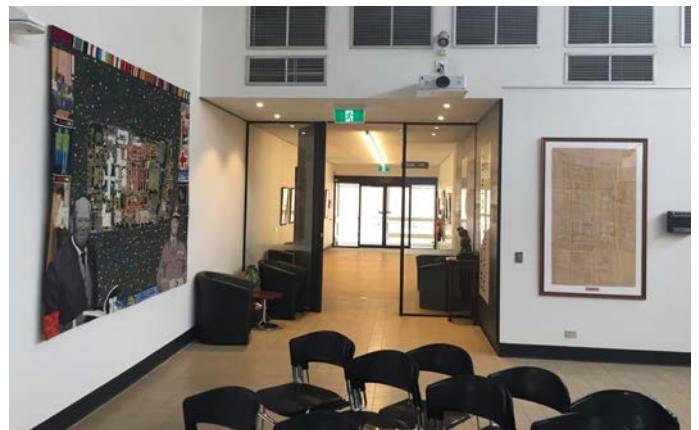
Shellshear Young Pty Ltd  
Currie & Brown  
Marline Newcastle Pty Ltd

### PROJECT SIZE

1,439m<sup>2</sup>

### COMPLETED

November 2018



## Austin Health Duckboard Function Centre

The Austin Health Duckboard Function Centre was the complete upgrade and refurbishment to the existing Duckworth Function Centre at the Austin Health Repatriation Hospital.

Works included major internal demolition works to existing amenities and adjoining areas, new amenities, creation of new seminar rooms and a main function area and art display centre.

The project required close collaboration with the Client and Architect by arete Australia to ensure the complex existing conditions were managed to provide a new state of the art multi-use function and art display area as well as complimenting the surrounding facilities.

### KEY PROJECT DETAILS

Healthcare  
Lump Sum  
Private  
Fitout  
Refurbishment

### CLIENT

Austin Health

### KEY CONSULTANTS

Gray Puksand Architects  
Aston Consulting

### VALUE

\$700,000

### PROJECT SIZE

529m<sup>2</sup>

### DURATION

3 Months

### COMPLETED

June 2017



## Capital Radiology Dandenong & Niddrie

Capital Radiology located in both Niddrie and Dandenong was completed by arete Australia in 2015.

The clinics were able to remain operational throughout the duration of the works, as all works were completed out of hours.

The works comprised of the refurbishment to the existing reception and waiting area at both locations as well as refurbishing the MRI Clinics.

### KEY PROJECT DETAILS

Healthcare  
Lump Sum  
Private  
Refurbishment

### CLIENT

Capital Radiology

### KEY CONSULTANTS

Pulse Architecture

### VALUE

\$200,000

### PROJECT SIZE

400m<sup>2</sup>

### DURATION

4 Months

### COMPLETED

October 2015





## Alfred Hospital Medical Records Refurbishment

arete was engaged to complete the works at the Alfred Hospital in their Medical Records Department.

These spaces serve the Medical Records and IT departments.

Works included was the refurbishment of the existing office spaces, amenities and staff kitchen areas.

### KEY PROJECT DETAILS

Healthcare  
Lump Sum  
Government - State  
Refurbishment

### CLIENT

Alfred Health

### KEY CONSULTANTS

Design Inc  
Lucid Consulting Australia

### VALUE

\$500,000

### PROJECT SIZE

1,119m<sup>2</sup>

### DURATION

3 Months

### COMPLETED

September 2016



## Vermont Eye Surgery

arete completed works at the Vermont Eye Surgery for Ophthalmologist group and Eye Surgery Associates.

Situated within a newly constructed medical complex, the fitout included a new reception area, consulting suites, treatment rooms, day procedure area as well as staff offices and amenities.

### KEY PROJECT DETAILS

Healthcare  
Lump Sum  
Private  
Fitout

### CLIENT

Eye Surgery Associates

### KEY CONSULTANTS

De Nova Group  
Sovereign Healthcare

### VALUE

\$1,000,000

### PROJECT SIZE

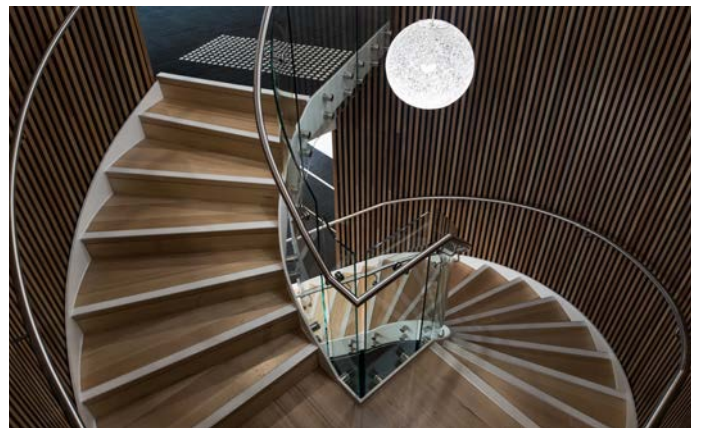
482m<sup>2</sup>

### DURATION

4 Months

### COMPLETED

August 2016



## Medical One Greensborough

arete Australia completed works at the Medical One site located in Greensborough.

The two floor medical centre fitout was completed within a newly constructed building. The completed works extended to medical suites, consulting rooms, patient treatment areas, staff offices, reception and waiting area which features a spiral staircase with glass balustrade.

### KEY PROJECT DETAILS

Healthcare  
Lump Sum  
Private  
Fitout  
Multi Level

### CLIENT

Medical One

### KEY CONSULTANTS

CLP Architecture

### VALUE

\$800,000

### PROJECT SIZE

575m<sup>2</sup>

### DURATION

3 Months

### COMPLETED

June 2016



Austin Heath Harold Stokes Building  
Pathology Laboratory

Austin Pathology fitout was a staged fitout to serve the growing needs of the Pathology Department located at Austin Hospital in Heidelberg’s Harold Stokes Building. The project saw the expansion of office space for the laboratory staff as well as the establishment of new meeting rooms, reception and management spaces.

Stage 1 was the fitout of a disused section of the building alongside the existing Pathology space and upon completion to manage the relocation of approximately 20 staff members.

Stage 2 was to demolish and fitout the existing office space into new functional office and meeting rooms for the remaining 10 staff members.

KEY PROJECT DETAILS

Healthcare  
Lump Sum  
Private  
Fitout

CLIENT

Austin Health

KEY CONSULTANTS

Kadar & Bradley  
Waterman AHW Pty Ltd

VALUE

\$300,000

PROJECT SIZE

280m<sup>2</sup>

DURATION

2 Months

COMPLETED

August 2017



## North Richmond Community Medically Supervised Injecting Centre

The Medically Supervised Injecting Centre is located at The North Richmond Community Health Centre (NRCHC).

The NRCHC has operated as part of the needle exchange programme for many years with the existing high prevalence of unsupervised drug injecting in the immediate vicinity of the NRCHC site.

The facility was designed to accommodate approximately 20 injecting clients at any one time plus additional clients who will be waiting to use the injecting facility or attending the facility for counselling and other purposes.

### KEY PROJECT DETAILS

Healthcare  
Construction Management  
Government - State  
Refurbishment

### CLIENT

Department of Health and Human Services

### VALUE

\$7,000,000

### DURATION

TBD

### KEY CONSULTANTS

APP  
Lyons  
MBM  
Bonnacci Group

### PROJECT SIZE

212m<sup>2</sup>

### COMPLETED

Current



## Japara Windsor Minor Works

The Japara healthcare project involved the renovation of 126 aged care rooms including bathrooms, kitchens and communal living spaces. The fundamental goal being, to complete all refurbishments whilst neighbouring rooms remained occupied by residents.

Noisy works in the building were kept to a minimum, with all cutting and loud fabrication conducted away from site, further reducing the impact on residents. A focus on resident satisfaction was key to the successful completion of these works.

arete worked with management to ensure there would be as little intrusion on the residents and their guests as possible, whilst the project progressed.

### KEY PROJECT DETAILS

Aged Care - Nursing Home  
Lump Sum  
Private  
Refurbishment

### CLIENT

Japara Healthcare Limited

### VALUE

\$250,000

### DURATION

8 Months

### KEY CONSULTANTS

Packvonhartel

### PROJECT SIZE

490m<sup>2</sup>

### COMPLETED

March 2017



DHHS Alcohol and Other  
Drugs  
Rehabilitation Services  
Windana

arete Australia were engaged to carry out the upgrade of in ground services to accommodate additional residential modules and group meeting rooms for the Department of Health and Human Services' Windana Rehabilitation facility.

Works included civil and landscaping works, cladding of new rooms with fire rated timber together with new decking, timber steps and metal roofing. These works were carried out in a live environment with people in

close proximity of works and required close monitoring of OHS.

Works included the installation of in ground holding tanks for water use and the new concrete paths, signage and bollard lighting leading to the new rooms.

**KEY PROJECT DETAILS**

Healthcare  
Community  
Lump Sum  
Government - State  
Civil  
Fitout

**CLIENT**

Department of Health and Human Services

**KEY CONSULTANTS**

Vincent Chrisp Architects

**VALUE**

\$2,400,000

**PROJECT SIZE**

600m<sup>2</sup>

**DURATION**

5 Months

**COMPLETED**

July 2018



DHHS Alcohol and Other  
Drugs  
Rehabilitation Services  
Healesville

The Department of Health and Human Services awarded arete Australia the Alcohol and Other Drugs Rehabilitation Service Centre in Healesville.

The project was completed successfully within two months through the tireless efforts of the site team and our subcontractors.

The works included installation of wet and dry fire systems with new sprinklers system, four new DDA compliant entry stairs, internal painting, new PWD bathroom, ember proof stainless steel mesh around the subfloor of two of the buildings.

**KEY PROJECT DETAILS**

Community  
Healthcare  
Lump Sum  
Government - State  
Fitout  
Refurbishment

**CLIENT**

Department of Health and  
Human Services

**VALUE**

\$1,600,000

**DURATION**

1 Month

**PROJECT SIZE**

500m<sup>2</sup>

**COMPLETED**

April 2018

**KEY CONSULTANTS**

Frank Kruize Consulting



